

18.11.24

Autumn 8

Weekly Newsletter

What's happening in school

Sam from the National Trust collected from school a large amount of Y2 and KS2 competition entries for naming Wembury Primary School Woodland. They have a really tricky job on their hands because they were all fantastic. Thank you for supporting your children in this.

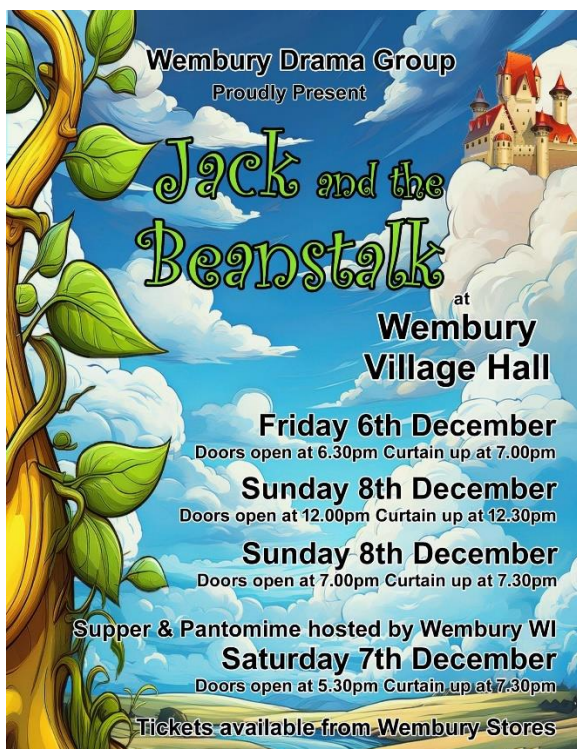
Wembury Village Pantomime

He's behind you.....

Wembury Drama Group presents - Jack & the Beanstalk Pantomime - Friday 6th December - Wembury Village Hall - all ticket sales and bar takings to help with the school pool renovation project.

Adults £8, Children £3 - tickets from Wembury Stores.

Doors open 6:30pm - curtain up at 7pm



Christingle Services in the church

We will be holding our annual Christingle services at St Werburgh Church in Wembury

EYFS/Key Stage 1 - 10:00-10:30

Key Stage 2 - 10:45 - 11:15

All are welcome to join us.

Christmas Lunch

This year we will be having our Christmas lunch over two days, Tuesday 3rd December for all children in KS2 and Thursday 5th December for all children in Foundation/KS1.

WeST Attendance Parent Questionnaire

As part of our ongoing efforts to improve attendance and enhance the educational experience for all pupils, we would like you to complete a short online school survey about school attendance.

Why is this survey important? The information gathered through this survey will help us evaluate our current support and make improvements as necessary. Your input directly impacts decisions on how we allocate resources and support pupil success. By participating, you contribute to shaping the future of our school community.

How long will it take? The survey should take no more than **10 minutes** to complete. Your valuable insights can make a significant difference, so we encourage you to set aside a few moments to share your thoughts.

Access the survey: Please click the link below or scan the QR code to start the survey. Your responses are confidential, and we appreciate your honest feedback.

Deadline: The survey will close shortly.

Thank you for your continued support in creating a positive learning environment for our pupils. Together, we can ensure that every child receives an excellent education.

Best regards,

Sam Wilkinson

On behalf of Westcountry Schools Trust

For your information the questions are as follows

Part One (5-part, likert-scale questions with a N/A option)

1 = strongly disagree

2 = disagree

3 = neutral

4 = agree

5 = strongly agree

1. I am happy with my child's attendance rate this year.
2. My child's school is concerned when they miss school.
3. My child's attendance rate is important to me.

4. My child's school absence policy is clearly communicated to parents.
5. I know the reasons my child is allowed to miss school and the reasons my child is not allowed to miss school
6. There are consequences if my child is absent without a valid reason
7. Pupils in my child's school get rewarded for good attendance
8. I think missing school too much could affect my child's grades
9. Missing school occasionally won't do my child any harm.
10. I find it difficult to get my child to go to school.

Part 2 – Open Comments

1. Is there anything more you think the school could do to improve pupils' attendance rates?

Web link and QR Code for Survey:

<https://www.qdpsurvey.co.uk/OnlineQuestionnaire?code=81588-65427-32988437>

Kind Regards

Sam Wilkinson